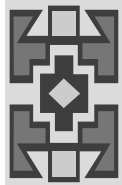


## Tier I: General Screening (for all students)

General screening is the process by which all students are assessed in order to measure current levels of achievement and progress and to identify individual student needs in a variety of areas—academic, language, and health. (See the flowchart on the following page.)



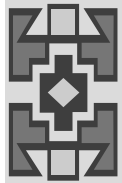
All students, including new students and transfer students, are screened for current levels of performance in academics, vision, hearing, language proficiency, general health, social and behavioral health, and socioeconomic status. An array of methods and instruments are used, including the results of statewide achievement assessments, language proficiency assessments, and informal classroom-based assessments and observations. Each school district sets up a system of procedures for general screening of students in the individual schools within its boundaries. Care must be given to **ensure that any and all tests used are appropriate, fair, and accurate**. This does not just apply to those tests used to measure academic knowledge and skills.



Ideally, a general screening committee in each school oversees the process and notifies parents school-wide of this process. This committee may be composed of an administrator, teachers, school counselor, school nurse, and/or other staff as needed. Screening is then done under the direction of the general screening committee. Careful documentation of general screening results is important for accurate identification of students' needs.



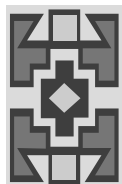
If the results of general screening suggest that an individual student is performing below standards or exceeding standards, then a member of the screening committee needs to work with that student's teacher to facilitate a referral to the SAT. Although screening records should be accessible to teachers and staff who work with a student, confidentiality must be safeguarded. (See FERPA: Family Educational Rights and Privacy Act, the federal law that protects the privacy of student education records.) **General screening is not considered to be an individual evaluation and therefore does not require prior parent notice or consent.**



General screening is an ongoing process and usually takes place in segments during the first months of school. For example, a class might be screened for hearing one week and vision the next. A new or transfer student would be screened based on a review of his or her cumulative folder by the receiving administrator or teacher. Title I schools often screen all students to determine their eligibility for immediate participation in school targeted assistance literacy programs.

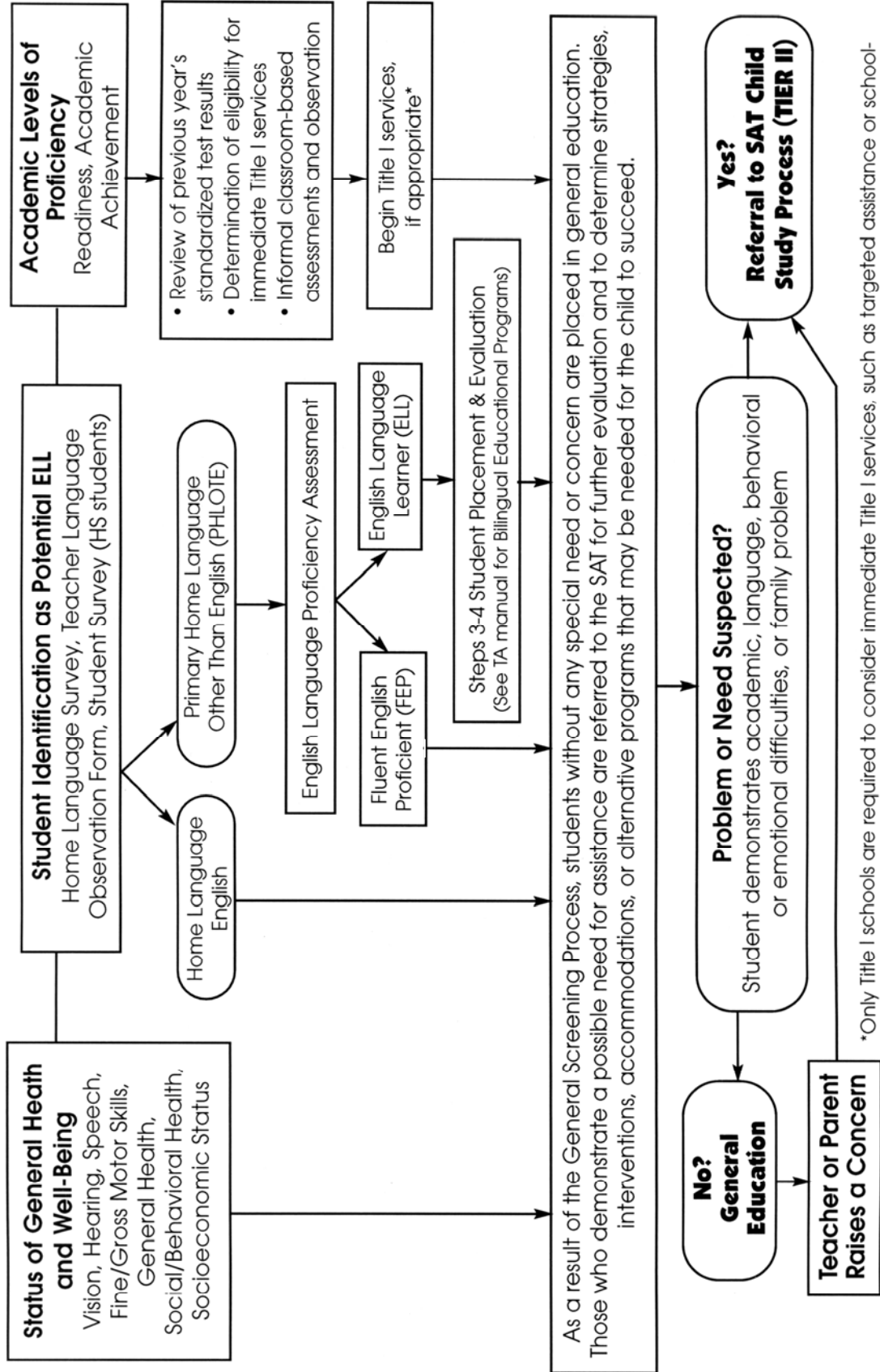


***NOTES:** One of the functions of general screening is to identify students who may need assistance with the English language in order to benefit from their education. This is most accurately measured when students are screened in English. 2) A preschool student that comes to the school's attention would be referred to the district's Child Find Office for screening.*



# Addressing Student Individual Needs

## TIER I: General Screening



\*Only Title I schools are required to consider immediate Title I services, such as targeted assistance or school-wide services. If you are a Title I school, general screening includes a review of school-determined criteria.